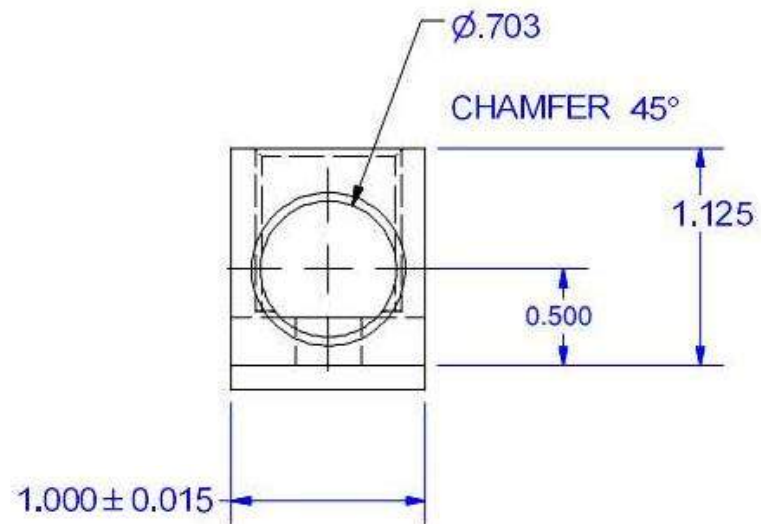
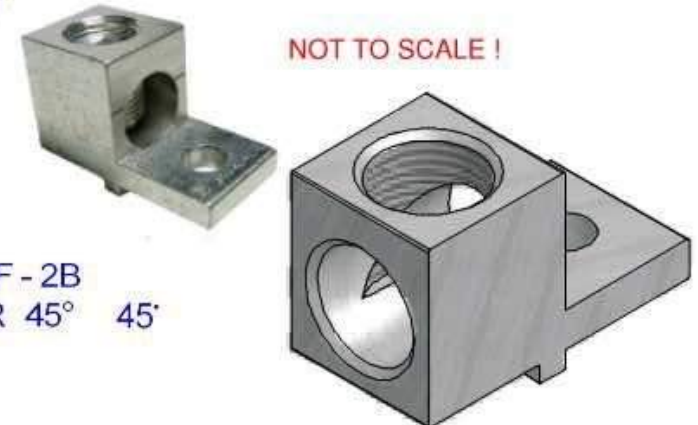
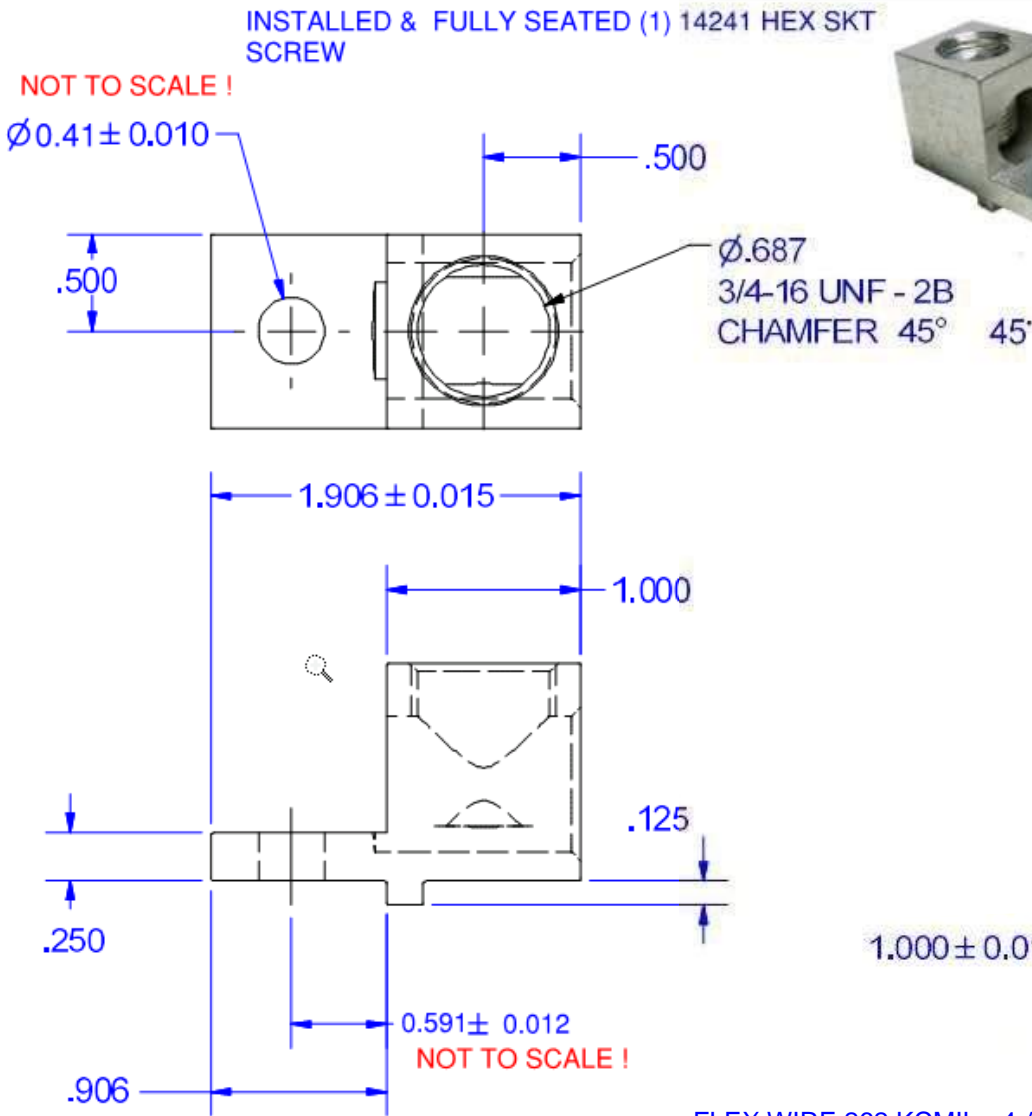


Saturday, November 18, 2017 3:45:34 PM - S350-TP-41-59 (SALES) -(2) - Copy - Bluebeam Revu x64

PART MARKED
 S350
 350 KCMIL-6
 CU9AL
 UL Logo
 CSA Logo
 IHI Logo



Cat No. S350 Style No. 2
 Drill, Enlarge, or Modify Mounting Holes
 1) Increase hole(s) dia. to 9/16 bolt
 2) Move location of mounting hole(s)
 3) If buying blank lug, put custom hole(s) in.

IHI UL/CSA Installation Guide to Drill or Enlarge Mounting Holes:
<https://lugsdirect.com/PDF%20Documents/IHI-MTG-HOLE-FIELD-MODS-UL&CSA-CERTIFICATIONS.pdf>

NOT FOR USE WHERE FAILURE CREATES A HAZARD TO HUMAN HEALTH OR SAFETY. ALL PRODUCTS ARE SUBJECT TO THIS FULL DISCLAIMER: <http://www.ihiconnectors.com/disclaimer.html>

FOR FURTHER INFORMATION ON THE PROPER USE OF THIS PRODUCT IN SPECIFIC APPLICATIONS SEE <http://www.ihiconnectors.com/GuideToFlexFlexibleFineStrandedWireCableMechanicalLugsFAQ.html>

<http://www.ihiconnectors.com/Technical-Data-Installation.htm>

SALES PRINT ISSUED 11-18-2017 CDMR

<small>THIS DRAWING AND DESIGN ARE THE PROPERTY OF INTERNATIONAL HYDRAULICS, INC., CLEVELAND, OHIO, AND MAY NOT BE REPRODUCED, USED FOR THE PURPOSES OF DESIGN OR MANUFACTURE, WITHOUT THE WRITTEN PERMISSION OF INTERNATIONAL HYDRAULICS, INC., CLEVELAND, OHIO.</small>					INTERNATIONAL HYDRAULICS, INC.				
<small>UNLESS OTHERWISE SPECIFIED:</small>					TITLE:				
+/- .015					S350-TP-41-59 (SALES) TURN PREVENT 350KCMIL - 6 AWG LUG				
MATERIAL: 6061-T6 (X1063)		SIZE:	DRAWN BY: TDS		DWG NO.: S350-TP-41-59 (SALES) 0		REV:		
TIN PLATE: EMS		DATE:	11-18-2017		THIS IS A CAD DRAWING, DO NOT MANUALLY REVISE				
FINISH: 131									